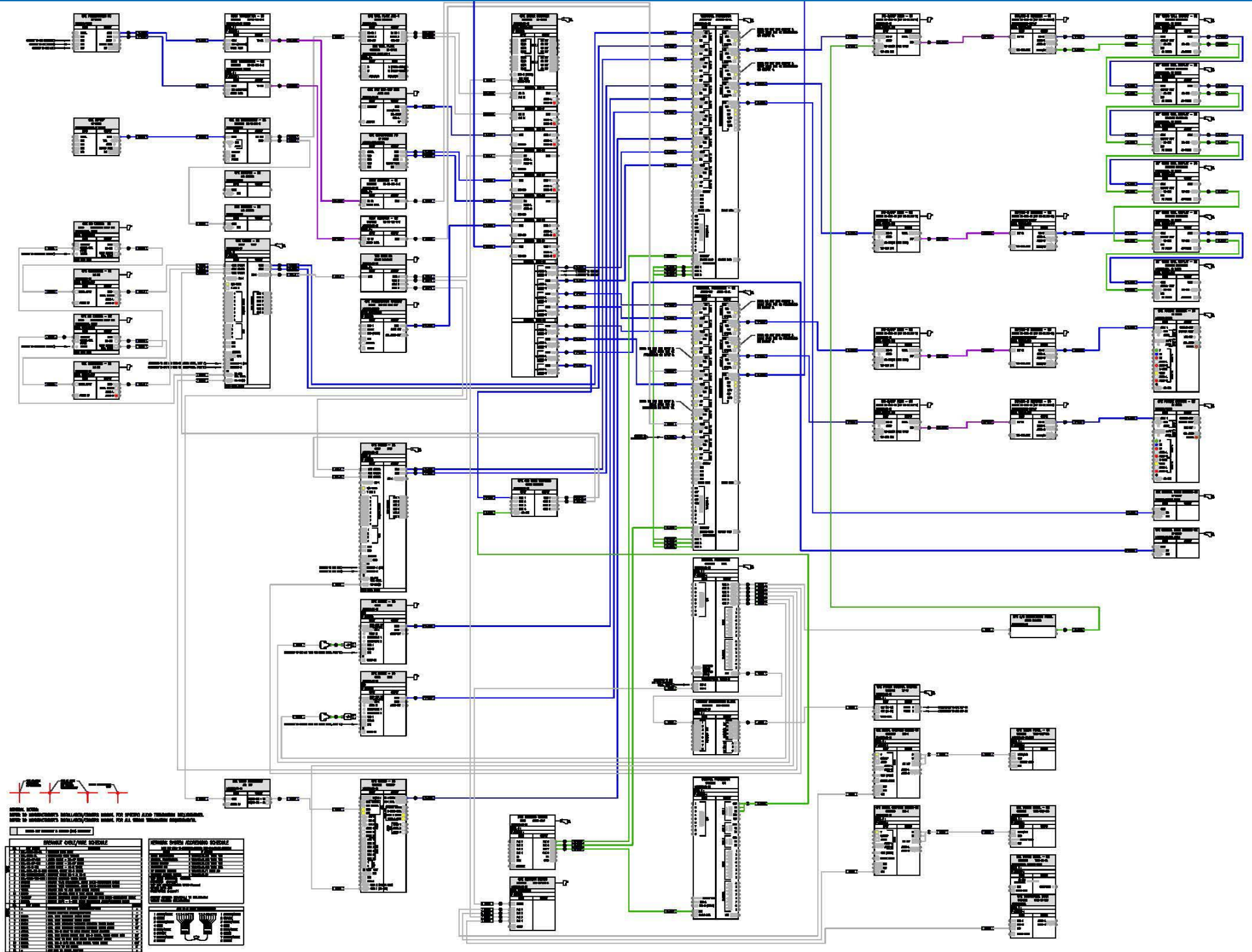
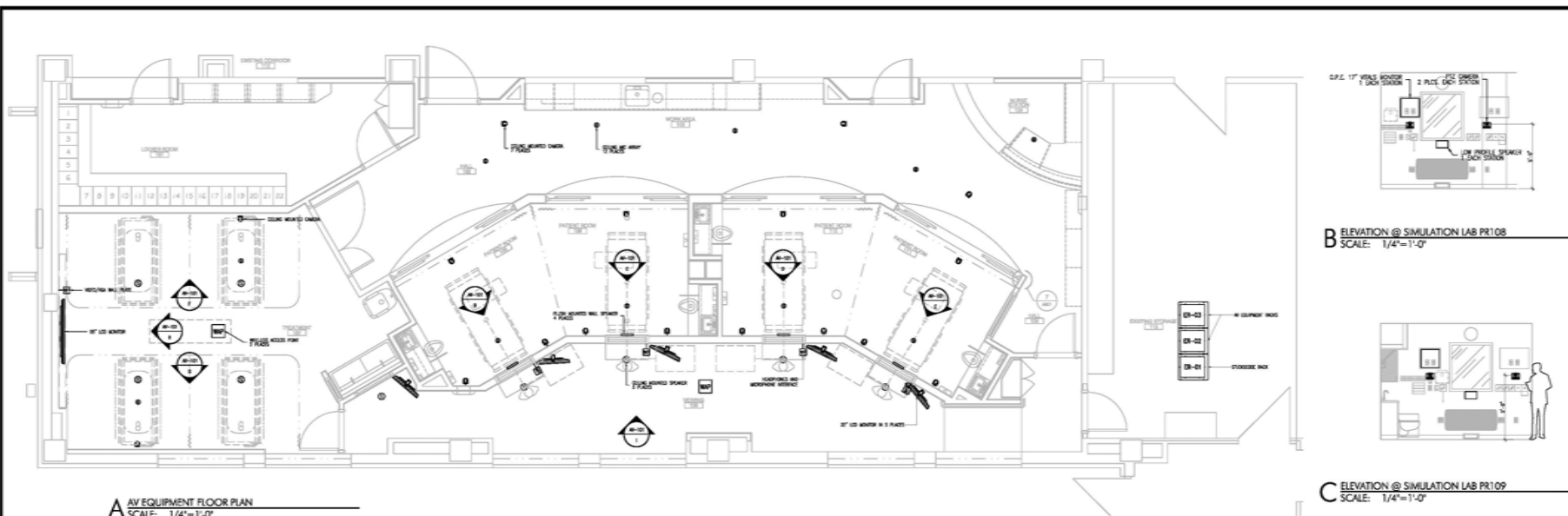


# CAD DRAWING EXAMPLE

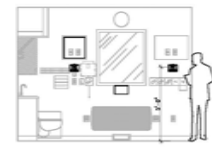




**A AV EQUIPMENT FLOOR PLAN**  
SCALE: 1/4"=1'-0"



**B ELEVATION @ SIMULATION LAB PR108**  
SCALE: 1/4"=1'-0"



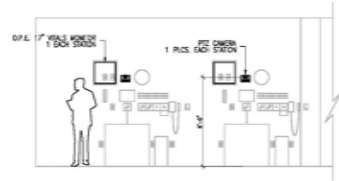
**C ELEVATION @ SIMULATION LAB PR109**  
SCALE: 1/4"=1'-0"



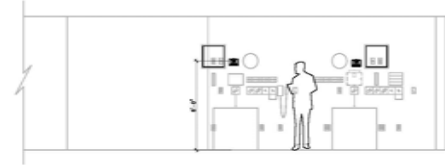
**D ELEVATION @ SIMULATION LAB PR110**  
SCALE: 1/4"=1'-0"



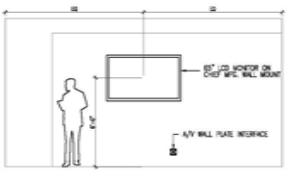
**E ELEVATION @ SIMULATION LAB PR111**  
SCALE: 1/4"=1'-0"



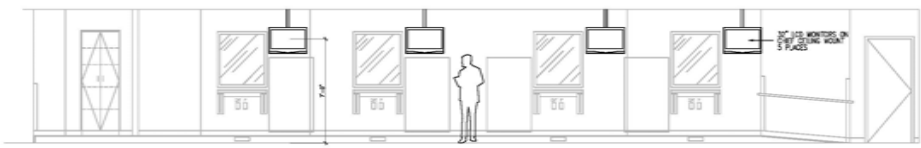
**F ELEVATION @ DEBRIEFING LAB**  
SCALE: 1/4"=1'-0"



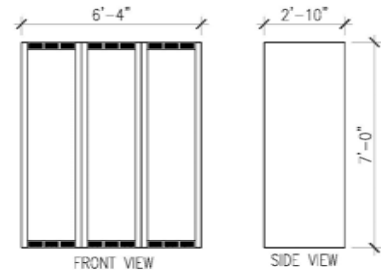
**G ELEVATION @ DEBRIEFING LAB**  
SCALE: 1/4"=1'-0"



**H ELEVATION @ DEBRIEFING LAB**  
SCALE: 1/4"=1'-0"



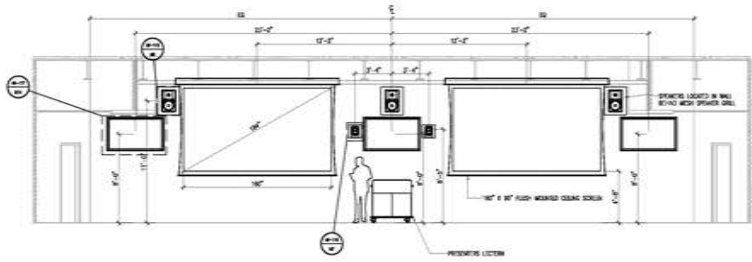
**I ELEVATION @ INSTRUCTORS STATION(S)**  
SCALE: 1/4"=1'-0"



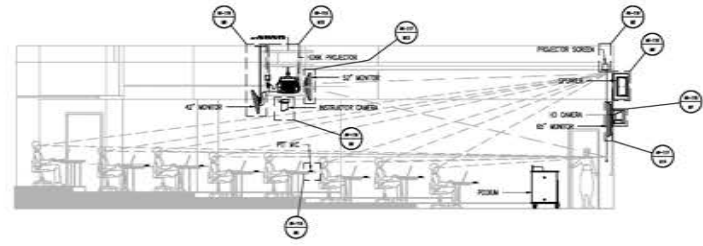
**J EQUIPMENT RACK DIMENSIONS**  
SCALE: 1/4"=1'-0"

THE INFORMATION CONTAINED IN THIS DOCUMENTATION IS PROPRIETARY TO SKC. THIS MATERIAL SHALL NOT BE REPRODUCED, DISTRIBUTED OR REPRODUCED WITHOUT THE WRITTEN CONSENT OF SKC. ANY SUCH ACTIVITY MAY BE CONSIDERED UNLAWFUL.

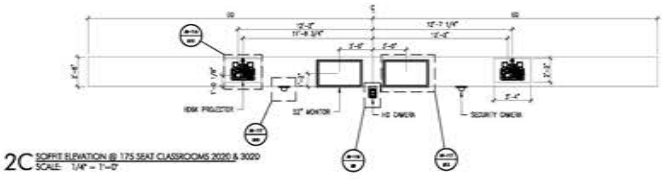
|                  |           |
|------------------|-----------|
| PROJECT NUMBER:  |           |
| SAMPLE DRAWN BY: | DATE:     |
| J A W            | 5/30/2008 |
| CHECKED BY:      | DATE:     |
| APPROVED BY:     | DATE:     |
| REVISION:        | DATE:     |
|                  |           |
|                  |           |
|                  |           |



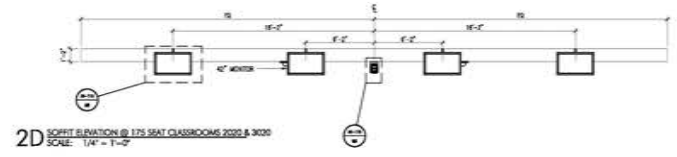
2A FRONT WALL ELEVATION @ 175 SEAT CLASSROOM (TYP)  
 SCALE: 1/4" = 1'-0"



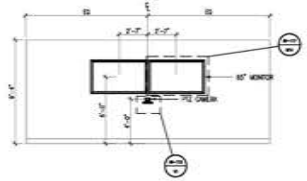
2B CROSS SECTION @ 175 SEAT CLASSROOM (TYP)  
 SCALE: 1/4" = 1'-0"



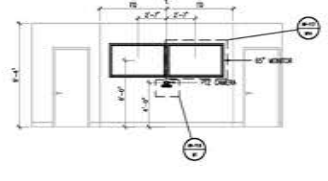
2C SPLIT ELEVATION @ 175 SEAT CLASSROOMS 2020 & 2020  
 SCALE: 1/4" = 1'-0"



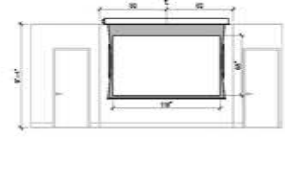
2D SPLIT ELEVATION @ 175 SEAT CLASSROOMS 2020 & 2020  
 SCALE: 1/4" = 1'-0"



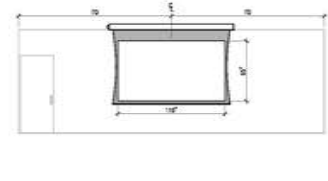
2E EAST WALL ELEVATION @ CONFERENCE ROOM 2013  
 SCALE: 1/4" = 1'-0"



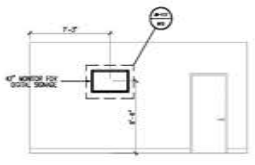
2F WEST WALL ELEVATION @ DEANS CONF ROOM 2044  
 SCALE: 1/4" = 1'-0"



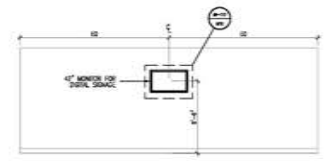
2G WEST WALL ELEVATION @ DEANS CONF ROOM 2044  
 SCALE: 1/4" = 1'-0"



2H SOUTH WALL ELEVATION @ CONF ROOM 2040  
 SCALE: 1/4" = 1'-0"



2I ELEVATION @ EAST LOBBY  
 SCALE: 1/4" = 1'-0"



2J EQUIPMENT ELEVATION @ STUDENT LOUNGE  
 SCALE: 1/4" = 1'-0"



2K ELEVATION @ 2ND FLOOR HALLWAYS (TYP)  
 SCALE: 1/4" = 1'-0"

SAMPLE DRAWING  
 EQUIPMENT ELEVATIONS  
 2ND FLOOR

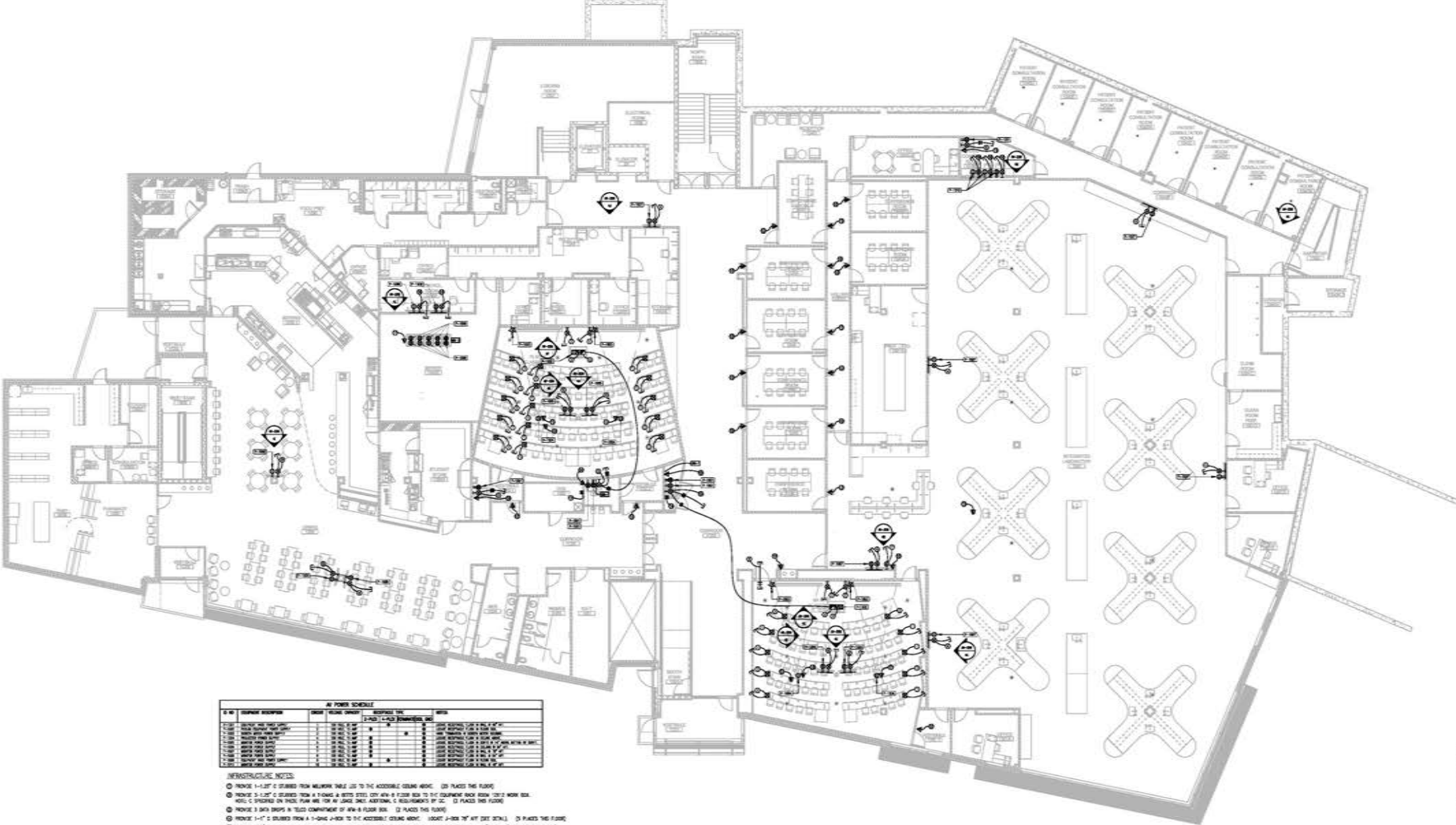
THE INFORMATION CONTAINED IN THIS DOCUMENTATION IS PROVIDED AS IS. THE AUTHOR ASSUMES NO RESPONSIBILITY FOR THE ACCURACY, COMPLETENESS, OR QUALITY OF ANY INFORMATION PROVIDED HEREIN. THE USER ASSUMES ALL LIABILITY FOR ANY SUCH ACTIVITY AND IS ADVISED THAT THE INFORMATION CONTAINED HEREIN IS NOT TO BE USED FOR ANY OTHER PURPOSES WITHOUT THE WRITTEN CONSENT OF SKC. ANY SUCH ACTIVITY WILL BE CONSIDERED UNLAWFUL.

PROJECT NUMBER:

|              |       |
|--------------|-------|
| DRAWN BY:    | DATE: |
| CHECKED BY:  | DATE: |
| APPROVED BY: | DATE: |

| REVISION | DATE | BY |
|----------|------|----|
|          |      |    |
|          |      |    |
|          |      |    |
|          |      |    |
|          |      |    |
|          |      |    |
|          |      |    |
|          |      |    |
|          |      |    |
|          |      |    |
|          |      |    |

DRAWING STATUS: NOT FOR CONSTRUCTION



**AV POWER SCHEDULE**

| NO. | DESCRIPTION          | QTY | UNIT | REMARKS       | QTY | UNIT | REMARKS |
|-----|----------------------|-----|------|---------------|-----|------|---------|
| 1   | 48" x 24" x 12" RACK | 1   |      | FOR EQUIPMENT |     |      |         |
| 2   | 48" x 24" x 12" RACK | 1   |      | FOR EQUIPMENT |     |      |         |
| 3   | 48" x 24" x 12" RACK | 1   |      | FOR EQUIPMENT |     |      |         |
| 4   | 48" x 24" x 12" RACK | 1   |      | FOR EQUIPMENT |     |      |         |
| 5   | 48" x 24" x 12" RACK | 1   |      | FOR EQUIPMENT |     |      |         |
| 6   | 48" x 24" x 12" RACK | 1   |      | FOR EQUIPMENT |     |      |         |
| 7   | 48" x 24" x 12" RACK | 1   |      | FOR EQUIPMENT |     |      |         |
| 8   | 48" x 24" x 12" RACK | 1   |      | FOR EQUIPMENT |     |      |         |
| 9   | 48" x 24" x 12" RACK | 1   |      | FOR EQUIPMENT |     |      |         |
| 10  | 48" x 24" x 12" RACK | 1   |      | FOR EQUIPMENT |     |      |         |
| 11  | 48" x 24" x 12" RACK | 1   |      | FOR EQUIPMENT |     |      |         |
| 12  | 48" x 24" x 12" RACK | 1   |      | FOR EQUIPMENT |     |      |         |
| 13  | 48" x 24" x 12" RACK | 1   |      | FOR EQUIPMENT |     |      |         |
| 14  | 48" x 24" x 12" RACK | 1   |      | FOR EQUIPMENT |     |      |         |
| 15  | 48" x 24" x 12" RACK | 1   |      | FOR EQUIPMENT |     |      |         |
| 16  | 48" x 24" x 12" RACK | 1   |      | FOR EQUIPMENT |     |      |         |
| 17  | 48" x 24" x 12" RACK | 1   |      | FOR EQUIPMENT |     |      |         |
| 18  | 48" x 24" x 12" RACK | 1   |      | FOR EQUIPMENT |     |      |         |
| 19  | 48" x 24" x 12" RACK | 1   |      | FOR EQUIPMENT |     |      |         |
| 20  | 48" x 24" x 12" RACK | 1   |      | FOR EQUIPMENT |     |      |         |

- INFRASTRUCTURE NOTES:**
- 1 PROVIDE 1-1/2" x 2" x 1/4" GALVANNEUM CHANNEL IRON TO THE ACCESSIBLE CEILING ABOVE. (1) PLACES THIS FLOOR.
  - 2 PROVIDE 3-1/2" x 3-1/2" x 1/4" GALVANNEUM CHANNEL IRON TO THE ACCESSIBLE CEILING ABOVE. (2) PLACES THIS FLOOR.
  - 3 PROVIDE 3-1/2" x 3-1/2" x 1/4" GALVANNEUM CHANNEL IRON TO THE ACCESSIBLE CEILING ABOVE. (2) PLACES THIS FLOOR.
  - 4 PROVIDE 3-1/2" x 3-1/2" x 1/4" GALVANNEUM CHANNEL IRON TO THE ACCESSIBLE CEILING ABOVE. (2) PLACES THIS FLOOR.
  - 5 PROVIDE 3-1/2" x 3-1/2" x 1/4" GALVANNEUM CHANNEL IRON TO THE ACCESSIBLE CEILING ABOVE. (2) PLACES THIS FLOOR.
  - 6 PROVIDE 3-1/2" x 3-1/2" x 1/4" GALVANNEUM CHANNEL IRON TO THE ACCESSIBLE CEILING ABOVE. (2) PLACES THIS FLOOR.
  - 7 PROVIDE 3-1/2" x 3-1/2" x 1/4" GALVANNEUM CHANNEL IRON TO THE ACCESSIBLE CEILING ABOVE. (2) PLACES THIS FLOOR.
  - 8 PROVIDE 3-1/2" x 3-1/2" x 1/4" GALVANNEUM CHANNEL IRON TO THE ACCESSIBLE CEILING ABOVE. (2) PLACES THIS FLOOR.
  - 9 PROVIDE 3-1/2" x 3-1/2" x 1/4" GALVANNEUM CHANNEL IRON TO THE ACCESSIBLE CEILING ABOVE. (2) PLACES THIS FLOOR.
  - 10 PROVIDE 3-1/2" x 3-1/2" x 1/4" GALVANNEUM CHANNEL IRON TO THE ACCESSIBLE CEILING ABOVE. (2) PLACES THIS FLOOR.
  - 11 PROVIDE 3-1/2" x 3-1/2" x 1/4" GALVANNEUM CHANNEL IRON TO THE ACCESSIBLE CEILING ABOVE. (2) PLACES THIS FLOOR.
  - 12 PROVIDE 3-1/2" x 3-1/2" x 1/4" GALVANNEUM CHANNEL IRON TO THE ACCESSIBLE CEILING ABOVE. (2) PLACES THIS FLOOR.
  - 13 PROVIDE 3-1/2" x 3-1/2" x 1/4" GALVANNEUM CHANNEL IRON TO THE ACCESSIBLE CEILING ABOVE. (2) PLACES THIS FLOOR.
  - 14 PROVIDE 3-1/2" x 3-1/2" x 1/4" GALVANNEUM CHANNEL IRON TO THE ACCESSIBLE CEILING ABOVE. (2) PLACES THIS FLOOR.
  - 15 PROVIDE 3-1/2" x 3-1/2" x 1/4" GALVANNEUM CHANNEL IRON TO THE ACCESSIBLE CEILING ABOVE. (2) PLACES THIS FLOOR.
  - 16 PROVIDE 3-1/2" x 3-1/2" x 1/4" GALVANNEUM CHANNEL IRON TO THE ACCESSIBLE CEILING ABOVE. (2) PLACES THIS FLOOR.
  - 17 PROVIDE 3-1/2" x 3-1/2" x 1/4" GALVANNEUM CHANNEL IRON TO THE ACCESSIBLE CEILING ABOVE. (2) PLACES THIS FLOOR.
  - 18 PROVIDE 3-1/2" x 3-1/2" x 1/4" GALVANNEUM CHANNEL IRON TO THE ACCESSIBLE CEILING ABOVE. (2) PLACES THIS FLOOR.
  - 19 PROVIDE 3-1/2" x 3-1/2" x 1/4" GALVANNEUM CHANNEL IRON TO THE ACCESSIBLE CEILING ABOVE. (2) PLACES THIS FLOOR.
  - 20 PROVIDE 3-1/2" x 3-1/2" x 1/4" GALVANNEUM CHANNEL IRON TO THE ACCESSIBLE CEILING ABOVE. (2) PLACES THIS FLOOR.

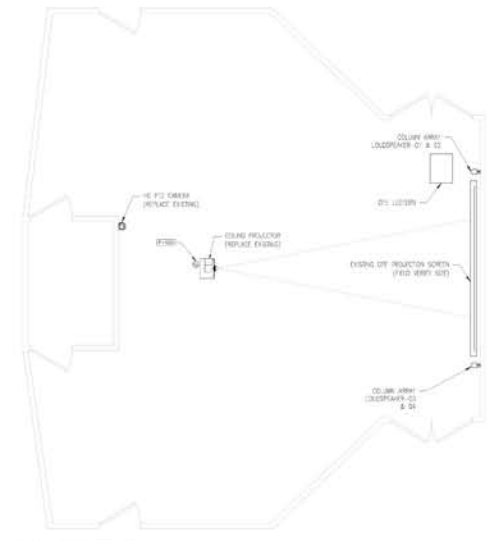
- PREP OPTIC NOTES:**
- 1 PROVIDE 8" x 8" x 1/2" ALUMINUM CHANNEL IRON TO THE ACCESSIBLE CEILING ABOVE. (1) PLACES THIS FLOOR.
  - 2 PROVIDE 8" x 8" x 1/2" ALUMINUM CHANNEL IRON TO THE ACCESSIBLE CEILING ABOVE. (1) PLACES THIS FLOOR.
  - 3 PROVIDE 8" x 8" x 1/2" ALUMINUM CHANNEL IRON TO THE ACCESSIBLE CEILING ABOVE. (1) PLACES THIS FLOOR.
  - 4 PROVIDE 8" x 8" x 1/2" ALUMINUM CHANNEL IRON TO THE ACCESSIBLE CEILING ABOVE. (1) PLACES THIS FLOOR.
  - 5 PROVIDE 8" x 8" x 1/2" ALUMINUM CHANNEL IRON TO THE ACCESSIBLE CEILING ABOVE. (1) PLACES THIS FLOOR.
  - 6 PROVIDE 8" x 8" x 1/2" ALUMINUM CHANNEL IRON TO THE ACCESSIBLE CEILING ABOVE. (1) PLACES THIS FLOOR.
  - 7 PROVIDE 8" x 8" x 1/2" ALUMINUM CHANNEL IRON TO THE ACCESSIBLE CEILING ABOVE. (1) PLACES THIS FLOOR.
  - 8 PROVIDE 8" x 8" x 1/2" ALUMINUM CHANNEL IRON TO THE ACCESSIBLE CEILING ABOVE. (1) PLACES THIS FLOOR.
  - 9 PROVIDE 8" x 8" x 1/2" ALUMINUM CHANNEL IRON TO THE ACCESSIBLE CEILING ABOVE. (1) PLACES THIS FLOOR.
  - 10 PROVIDE 8" x 8" x 1/2" ALUMINUM CHANNEL IRON TO THE ACCESSIBLE CEILING ABOVE. (1) PLACES THIS FLOOR.
  - 11 PROVIDE 8" x 8" x 1/2" ALUMINUM CHANNEL IRON TO THE ACCESSIBLE CEILING ABOVE. (1) PLACES THIS FLOOR.
  - 12 PROVIDE 8" x 8" x 1/2" ALUMINUM CHANNEL IRON TO THE ACCESSIBLE CEILING ABOVE. (1) PLACES THIS FLOOR.
  - 13 PROVIDE 8" x 8" x 1/2" ALUMINUM CHANNEL IRON TO THE ACCESSIBLE CEILING ABOVE. (1) PLACES THIS FLOOR.
  - 14 PROVIDE 8" x 8" x 1/2" ALUMINUM CHANNEL IRON TO THE ACCESSIBLE CEILING ABOVE. (1) PLACES THIS FLOOR.
  - 15 PROVIDE 8" x 8" x 1/2" ALUMINUM CHANNEL IRON TO THE ACCESSIBLE CEILING ABOVE. (1) PLACES THIS FLOOR.
  - 16 PROVIDE 8" x 8" x 1/2" ALUMINUM CHANNEL IRON TO THE ACCESSIBLE CEILING ABOVE. (1) PLACES THIS FLOOR.
  - 17 PROVIDE 8" x 8" x 1/2" ALUMINUM CHANNEL IRON TO THE ACCESSIBLE CEILING ABOVE. (1) PLACES THIS FLOOR.
  - 18 PROVIDE 8" x 8" x 1/2" ALUMINUM CHANNEL IRON TO THE ACCESSIBLE CEILING ABOVE. (1) PLACES THIS FLOOR.
  - 19 PROVIDE 8" x 8" x 1/2" ALUMINUM CHANNEL IRON TO THE ACCESSIBLE CEILING ABOVE. (1) PLACES THIS FLOOR.
  - 20 PROVIDE 8" x 8" x 1/2" ALUMINUM CHANNEL IRON TO THE ACCESSIBLE CEILING ABOVE. (1) PLACES THIS FLOOR.

**SAMPLE DRAWING**  
 INFRASTRUCTURE FLOOR PLAN  
 1ST FLOOR

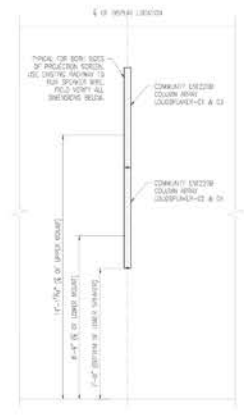
THE INFORMATION CONTAINED IN THIS DOCUMENTATION IS PROVIDED FOR INFORMATIONAL PURPOSES ONLY AND IS NOT TO BE USED FOR ANY OTHER PURPOSES WITHOUT THE WRITTEN CONSENT OF SKC. ANY SUCH ACTIVITY MAY BE CONSIDERED A VIOLATION.

**DRAWING STATUS: NOT FOR CONSTRUCTION**

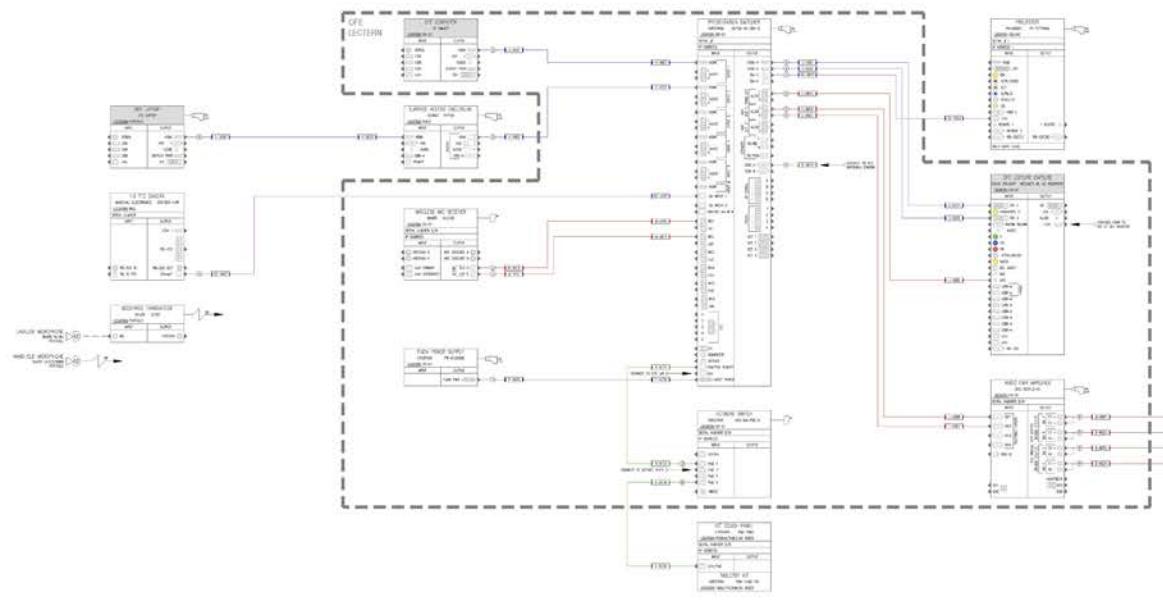
PROJECT NUMBER: AV-201  
 DRAWN BY: JLS  
 DATE: 3/24/2009  
 CHECKED BY: JLS  
 APPROVED BY: JLS  
 REVISION: SKI



**A** AV SYSTEM FLOOR PLAN  
SCALE: N.T.S.



**B** AV SYSTEM EQUIPMENT ELEVATION, COLUMN ARRAY LOUSPFAKERS  
SCALE: 3/8" = 1'-0"



**C** AV SYSTEM SCHEMATIC  
SCALE: N.T.S.

GENERAL NOTES  
REFER TO MANUFACTURER'S INSTALLATION/DIAGNOSIS MANUAL FOR SPECIFIC ADDRESS REMOVAL REQUIREMENTS.  
REFER TO MANUFACTURER'S INSTALLATION/DIAGNOSIS MANUAL FOR ADDRESS REMOVAL REQUIREMENTS.

BRANDS/DIAGNOSIS SCHEDULE

| ITEM | DESCRIPTION          | MANUFACTURER | MODEL    | QUANTITY |
|------|----------------------|--------------|----------|----------|
| 1.0  | DTG SECTION          | DTG          | DTG 1600 | 1        |
| 2.0  | LARGE ADDRESS SOURCE | DTG          | DTG 1600 | 1        |
| 3.0  | VIDEO MC REVER       | DTG          | DTG 1600 | 1        |
| 4.0  | TANTR 1600           | DTG          | DTG 1600 | 1        |
| 5.0  | TOWER 1600           | DTG          | DTG 1600 | 1        |
| 6.0  | DTG 1600             | DTG          | DTG 1600 | 1        |
| 7.0  | DTG 1600             | DTG          | DTG 1600 | 1        |
| 8.0  | DTG 1600             | DTG          | DTG 1600 | 1        |
| 9.0  | DTG 1600             | DTG          | DTG 1600 | 1        |
| 10.0 | DTG 1600             | DTG          | DTG 1600 | 1        |
| 11.0 | DTG 1600             | DTG          | DTG 1600 | 1        |
| 12.0 | DTG 1600             | DTG          | DTG 1600 | 1        |
| 13.0 | DTG 1600             | DTG          | DTG 1600 | 1        |
| 14.0 | DTG 1600             | DTG          | DTG 1600 | 1        |
| 15.0 | DTG 1600             | DTG          | DTG 1600 | 1        |
| 16.0 | DTG 1600             | DTG          | DTG 1600 | 1        |
| 17.0 | DTG 1600             | DTG          | DTG 1600 | 1        |
| 18.0 | DTG 1600             | DTG          | DTG 1600 | 1        |
| 19.0 | DTG 1600             | DTG          | DTG 1600 | 1        |
| 20.0 | DTG 1600             | DTG          | DTG 1600 | 1        |

NUMERICAL ADDRESS SCHEDULE

| ADDRESS | DESCRIPTION          | MANUFACTURER | MODEL    |
|---------|----------------------|--------------|----------|
| 1.0     | DTG SECTION          | DTG          | DTG 1600 |
| 2.0     | LARGE ADDRESS SOURCE | DTG          | DTG 1600 |
| 3.0     | VIDEO MC REVER       | DTG          | DTG 1600 |
| 4.0     | TANTR 1600           | DTG          | DTG 1600 |
| 5.0     | TOWER 1600           | DTG          | DTG 1600 |
| 6.0     | DTG 1600             | DTG          | DTG 1600 |
| 7.0     | DTG 1600             | DTG          | DTG 1600 |
| 8.0     | DTG 1600             | DTG          | DTG 1600 |
| 9.0     | DTG 1600             | DTG          | DTG 1600 |
| 10.0    | DTG 1600             | DTG          | DTG 1600 |
| 11.0    | DTG 1600             | DTG          | DTG 1600 |
| 12.0    | DTG 1600             | DTG          | DTG 1600 |
| 13.0    | DTG 1600             | DTG          | DTG 1600 |
| 14.0    | DTG 1600             | DTG          | DTG 1600 |
| 15.0    | DTG 1600             | DTG          | DTG 1600 |
| 16.0    | DTG 1600             | DTG          | DTG 1600 |
| 17.0    | DTG 1600             | DTG          | DTG 1600 |
| 18.0    | DTG 1600             | DTG          | DTG 1600 |
| 19.0    | DTG 1600             | DTG          | DTG 1600 |
| 20.0    | DTG 1600             | DTG          | DTG 1600 |

AV SYSTEM BACK ELEVATION

| ITEM | DESCRIPTION              | MANUFACTURER | MODEL    | QUANTITY |
|------|--------------------------|--------------|----------|----------|
| 1.0  | AV SYSTEM BACK ELEVATION | DTG          | DTG 1600 | 1        |
| 2.0  | AV SYSTEM BACK ELEVATION | DTG          | DTG 1600 | 1        |
| 3.0  | AV SYSTEM BACK ELEVATION | DTG          | DTG 1600 | 1        |
| 4.0  | AV SYSTEM BACK ELEVATION | DTG          | DTG 1600 | 1        |
| 5.0  | AV SYSTEM BACK ELEVATION | DTG          | DTG 1600 | 1        |
| 6.0  | AV SYSTEM BACK ELEVATION | DTG          | DTG 1600 | 1        |
| 7.0  | AV SYSTEM BACK ELEVATION | DTG          | DTG 1600 | 1        |
| 8.0  | AV SYSTEM BACK ELEVATION | DTG          | DTG 1600 | 1        |
| 9.0  | AV SYSTEM BACK ELEVATION | DTG          | DTG 1600 | 1        |
| 10.0 | AV SYSTEM BACK ELEVATION | DTG          | DTG 1600 | 1        |
| 11.0 | AV SYSTEM BACK ELEVATION | DTG          | DTG 1600 | 1        |
| 12.0 | AV SYSTEM BACK ELEVATION | DTG          | DTG 1600 | 1        |
| 13.0 | AV SYSTEM BACK ELEVATION | DTG          | DTG 1600 | 1        |
| 14.0 | AV SYSTEM BACK ELEVATION | DTG          | DTG 1600 | 1        |
| 15.0 | AV SYSTEM BACK ELEVATION | DTG          | DTG 1600 | 1        |
| 16.0 | AV SYSTEM BACK ELEVATION | DTG          | DTG 1600 | 1        |
| 17.0 | AV SYSTEM BACK ELEVATION | DTG          | DTG 1600 | 1        |
| 18.0 | AV SYSTEM BACK ELEVATION | DTG          | DTG 1600 | 1        |
| 19.0 | AV SYSTEM BACK ELEVATION | DTG          | DTG 1600 | 1        |
| 20.0 | AV SYSTEM BACK ELEVATION | DTG          | DTG 1600 | 1        |

**D** AV SYSTEM BACK ELEVATION  
SCALE: 1/12" = 1'-0"

DRAWING STATUS: AS BUILT - 7-13-2020

AV-301